

## How and When to Use Provox® Luna®

Provox Luna is a solution designed to help you sleep comfortably, to soothe your skin and to improve lung health. Provox Luna is a complete nighttime system that includes Provox Luna Adhesive made from skin-friendly hydrogel, a soft heat and moisture exchanger called Provox Luna HME, and Luna ShowerAid with special strips to keep the adhesive in place when showering.



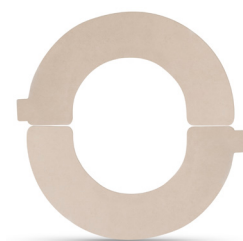
Provox Luna Adhesive



Provox Luna HME



Provox Luna Shower Aid



Provox Adhesive Strip

## Is Provox Luna a good nighttime solution for you?

If you answer yes to one or more of the following questions, Provox Luna could help you have better nights and prepare for better days:

- Do you have mucus issues?
- Do you wake up at night coughing?
- Do you wake up at night because your HME or attachment is uncomfortable?
- Do you ever go without an HME at night?
- During the past month, have you taken medicine (prescribed or “over the counter”) to help you sleep?
- Do you suffer from poor sleep quality?
- During the past month, have you had one or more days when the skin around your stoma has become red and/or irritated?
- Do you ever take a break from wearing an HME at night to let your skin rest?

## How to use Provox Luna

### Getting Ready for Bed

Follow these simple nighttime steps to apply Provox Luna Adhesive and HME:

1. REMOVE your daytime adhesive
  - Gently remove your daytime adhesive by using Provox® Adhesive Remover
2. CLEAN your skin to help avoid skin irritation and get a good seal
  - Use Provox® Cleaning Towel to clean the skin around your stoma and remove any oil and adhesive residues

Provox Luna is meant to be used as a system and is not interchangeable with other Provox products.

3. PREPARE your skin so that Provox Luna attaches properly
- It is important to wash your skin with soap and water ONLY and let your skin dry completely

**Note:** DO NOT use any skin barrier, cream or alcohol wipe immediately prior to applying Luna. Products that leave residue on the skin (e.g. oily soap, skin cream, etc.) may prevent the adhesive from sticking properly.

4. APPLY Provox Luna
- Take the Luna adhesive out of the packaging, hold the outer baseplate backing and peel away the middle section
  - Attach the bottom part first, aligning the inner ring with the bottom lip of the stoma
  - Massage the middle part onto the skin and peel off the sides, then massage the entire adhesive onto the skin

5. Attach the Luna HME
- Put the Luna HME into the adhesive ring with a twisting motion

### How to remove the Provox Luna Adhesive and HME

- Gently squeeze the Luna HME to remove it from the Luna Adhesive
- Carefully remove the Luna Adhesive from the skin
- If needed, moisten the Luna Adhesive with water to loosen it

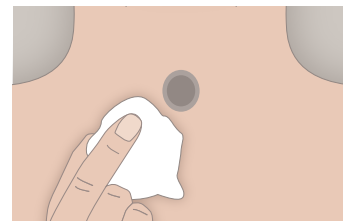
### Showering with Luna

- Use the Provox® Adhesive Strip™ set to cover the Luna adhesive edge to prevent it from loosening from the skin
- Replace the Luna HME with the Provox® Luna ShowerAid before showering

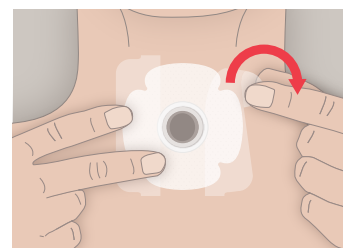
### How to speak with the Provox Luna HME

- To speak, occlude the Luna HME by covering the two openings on the sides

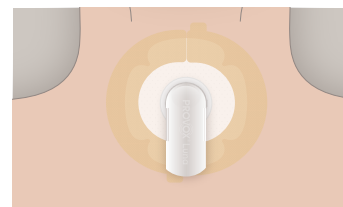
**Note:** The Luna HME is not designed for daytime speech



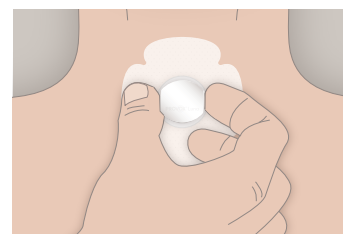
Use Provox Cleaning Towel to remove any residue left from your daytime adhesive. Then, clean the skin around the stoma with soap and water ONLY. Let dry completely.



Apply Provox Luna Adhesive.



Luna ShowerAid and Adhesive Strips are designed to protect the stoma and the Luna Adhesive while showering.



Occluding the Luna HME.